



Complete Vision Solutions

RIGEL

Traffic Analyser Intelligent Camera



FEATURES

- Traffic Jam Detection
- Stopped Vehicle Detection (AID)
- Wrong Way Vehicle Detection
- Smoke & Fire Detection
- Vehicles Counting & Classification
- Average Speed Evaluation
- Statistic Reports
- Obscuring Detection
- MPEG4 Multicast video streaming
- High Resolution JPEG Event/Alarm Storage
- Connectivity: GigaEthernet, Fiber Optics, Power Line, Wireless and Cellular Networks

DISTRIBUTED INTELLIGENCE

- + reliable
- + effective
- + safe

RIGEL: Embedded All-In-One Traffic Analysis System and CCTV Surveillance

Typical Applications

Highways



Tunnels



Urban & Freeway Roads



Cross & Critical Areas



Bridges

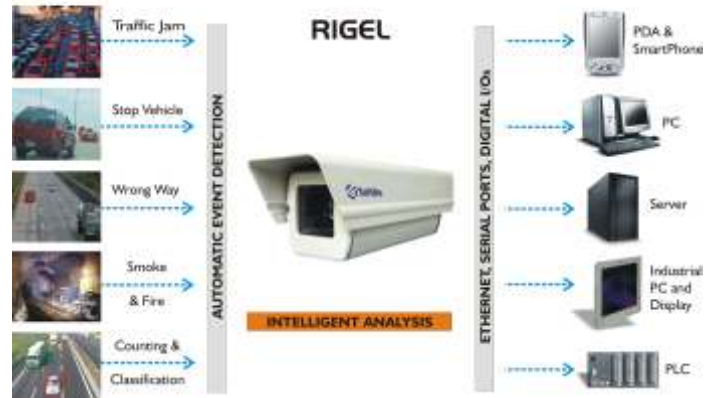


Roundabouts

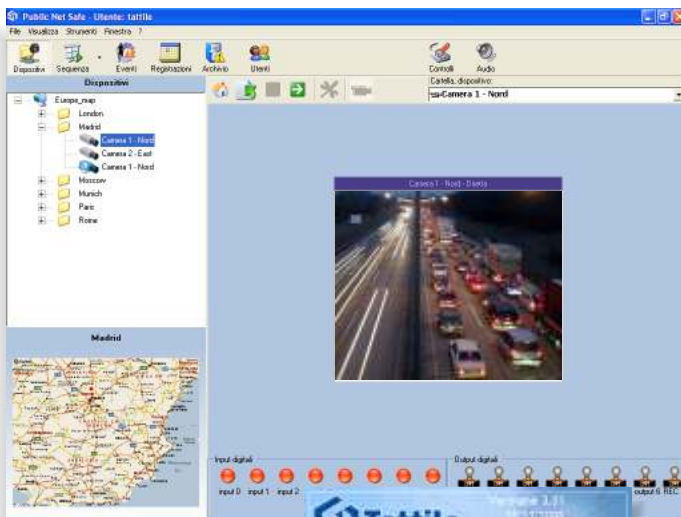


TRAFFIC ANALYSER INTELLIGENT CAMERA

SOFTWARE FEATURES	
DEVICE CONFIGURATION	
Remote Control	Complete remote control of the system via TCP/IP
IP device set-up	IP address, Netbiosname, Gateway Address, Time Server Address, DNS Server Address, WINS Server Address, DHCP
System Upgrade	Fully upgradable via TCP/IP
VIDEO	
Optimized Streaming	MPEG4 multicast/multi-unicast CIF@25fps
High quality Streaming	Full resolution JPEG at maximum CCD frame rate
USER INTERFACE	
Logistic	Automatic Device Discovery, Hierarchical Map Representation
Analysis	Graphical definition of sensitive areas of image
Alarm	Multiple programmable alarm strategies
Data	Fully programmable statistic reports
STORAGE	
Local	Up to 8 GB SD memory card
Remote	FTP Server and Streaming Server for Picture, Video, Data



TECHNICAL FEATURES	
SYSTEM	
Analysis	Up to 25 Fps
Operating System	TOS (Tattile Operating System)
Software	SECURCAM – Traffic Image Control
CAMERA	
Sensor	BW or Color ExView CCD
Acquisition	Interlaced / Progressive Scan
Resolution	720x576 or 1400x1000 pixels
Audio Input	1 audio input 1,8 Vpp Z _{IN} =12K
Audio Output	1 mono audio output
IRIS Control	DC Iris / Manual
Frame rate	25 fps @ 720x576; 15 fps @ 1400x1000 pixels
DIGITAL I/O	
Input	2 Optoisolated inputs 24 Vdc
Output	3 PNP Optoisolated outputs 24 Vdc
COMMUNICATION	
Ethernet 10/100/1000	TCP, UDP, FTP, HTTP, DHCP
RS 232	1 line baud rate 1200:115200
RS 485	1 line half duplex baud rate 1200:115200
SD Interface	Supports all mass memories SD memory card
ENVIRONMENTAL	
Operating Temp.	-10° to 50° C
Operating Humid.	10 to 90% non cond.
Power Supply	24 Vdc +/- 5%, 7W
Housing and Sunshield	Extruded Aluminum Body Epoxy polyester powder painted Color RAL 9002
Weight and Dimensions	1300 g 300 x 100 x 100 mm (L x W x D)
Lens	C mount standard
Protection level	Weatherproof standard IP66 according to EN 60529



Supervisor Software
for Control Rooms
and Mobile Stations

Alarm Management via



PNS II - Evolution PNS II - Web PNS II - Mobile