

TechTip V1022 - Record to Onboard Storage Cards Using Triggers

Applies to:

- IQeye 7xx Family, IQeye Alliance

Summary:

The IQeye 7 series and IQeye Alliance series cameras have the ability to utilize onboard storage for archiving images. IQeye 7xx cameras will use CF (compact flash) cards Type I or Type II, while the Alliance domes will utilize an SDHC memory card.

Contents:

- Configuring IQeye to record to internal storage card
- Retrieving stored images from internal storage card

Configuring the IQeye to record to onboard storage cards

- Browse to your camera's web-based GUI, and log in using the 'root' account (username: root & password: system by default).
- Under the 'Triggers' tab, configure the 'Trigger Settings' and 'Email' according to your preferences (be sure 'Actions' is set to either "FTP" or "both").
- Under 'FTP', specify the hostname as your IQeye camera's IP address.
- The 'username' and 'password' fields must match the credentials used to log into privileged mode on your IQeye.
- 'File name' can be set to whatever you choose (see the IQeye Reference Manual for proper dynamic variables).
- 'File path' MUST start with "/hdisk/" to record images to the internal storage card.

The screenshot shows the 'FTP' configuration window in the IQeye web-based GUI. The fields are as follows:

hostname	<camIP>
username	root
password	••••••
file name	\$ST.\$FN
file path	/hdisk/\$SN/\$SD

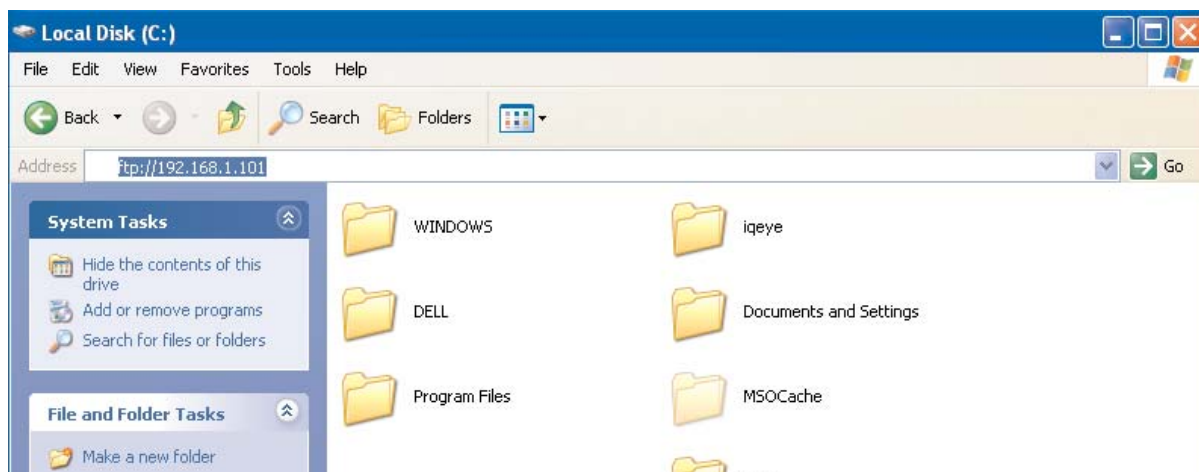
- Confirm that you are able to record images by looking at the 'Status' box. 'FTP Status' should read "Success":

The screenshot shows the 'Status' box in the IQeye web-based GUI. The status is as follows:

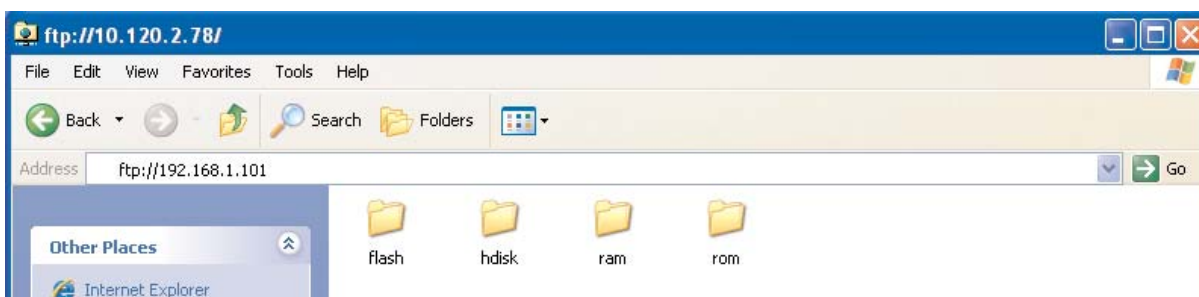
e-mail status:	None
FTP status:	Success

Retrieving recorded images stored to onboard storage card

- To view images stored on the onboard card that were recorded using Triggers, initiate an FTP session.
One method to do this is using Windows Explorer:
- Browse to your Local Disk (C:\ in this example).
- In the Address bar, replace C:\ with "ftp://<camIP>" where <camIP> is the IP address of your IQeye camera and click 'Go'



- You should then see the directories on your IQeye and onboard storage card.



- Log into privileged mode by selecting 'File' -> "Login As..."
- Enter your privileged username and password and click "Log On"
- After correctly entering your credentials, you should see the user you logged in as in the bottom info bar:

User: root

- Your recorded images are stored under the "hdisk" directory and subsequent subdirectories (<Camera Name>/<Date>/, by default).
- From there, you can copy and paste, or drag and drop, your images to the location of your choice.